

Improved multimodal admittance method in varying cross section waveguides

| | |
|-------------------------------|--|
| Journal: | <i>Proceedings A</i> |
| Manuscript ID: | Draft |
| Article Type: | Research |
| Date Submitted by the Author: | n/a |
| Complete List of Authors: | Maurel, Agnes; Insitut Langein, ESPCI Mercier, Jean-Francois; Poems, ENSTA Pagneux, Vincent; LAUM, ; |
| Subject: | Acoustics < PHYSICS, mathematical physics < PHYSICS |
| Keywords: | Waveguide, multimodal method, boundary mode, impedance matrix |
| | |

SCHOLARONE™
Manuscripts

Only

1
2
3
4
5
6
7
8
9
10
11
12
13
14
15
16
17
18
19
20
21
22
23
24
25
26
27
28
29
30
31
32
33
34
35
36
37
38
39
40
41
42
43
44
45
46
47
48
49
50
51
52
53
54
55
56
57
58
59
60

rspa.royalsocietypublishing.org

Research

Article submitted to journal

Subject Areas:

acoustic, mathematical physics

Keywords:

waveguide, multimodal method,
boundary mode, impedance matrix

Author for correspondence:

Agnès Maurel

e-mail: agnes.maurel@espci.fr

Improved multimodal admittance method in varying cross section waveguides

Agnès Maurel¹, Jean-François Mercier²
and Vincent Pagneux³

¹Institut Langevin, 1 rue Jussieu 75005 Paris - France,

²Poems - ENSTA, 828 boulevard des Maréchaux
91762 Palaiseau - France,

³LAUM - Université du Maine, av. O. Messiaen 72085
Le Mans- France

An improved version of the multimodal admittance method in acoustic waveguides with varying cross section is presented. This method aims at a better convergence with respect to the number of transverse modes that are taken into account. It is based on an enriched modal expansion of the pressure: the N first modes are the local transverse modes and a supplementary $(N + 1)$ th mode, called boundary mode, is a well chosen transverse function orthogonal to the N first modes. This expansion leads to the classical form of the coupled mode equations where the component of the boundary mode is of evanescent character. Under this form, the multimodal admittance method based on the Riccati equation on the admittance matrix (the Dirichlet to Neumann operator) is straightforwardly implemented. With this supplementary mode, in addition to the improvement of the convergence of the pressure field, results show a super convergence of the scattered field outside of the varying cross section region.

1. Introduction

Coupled Mode Theory is a classical method to deal with the propagation in inhomogeneous waveguides [1–3]. Starting from the second order coupled mode equations, the multimodal admittance method is based on the introduction of the admittance matrix which is the modal representation of the Dirichlet to Neumann operator on the transverse section of the waveguide [4–6]. The admittance matrix is governed by a matrix Riccati differential equation that can be integrated from the radiation condition at the outlet of the waveguide toward the source position. Then, it remains only to account for the source to get an initial condition on the pressure at the inlet that can be used to calculate the field in the whole waveguide by integrating a first order differential equation. This method allows us to avoid the problem of the numerical divergence due to the presence of evanescent modes. Besides, when only the scattering matrix is needed, one advantage of the whole method is that the admittance matrix does not have to be stored during the integration of the initial value problem starting from the radiation condition. As any method used to solve the coupled mode equations, the multimodal admittance method has a rate of convergence with respect to the number of local transverse modes in the series expansion of the pressure at each location on the axis of the waveguide. In the literature, several propositions have been made to improve this rate of convergence [7–9]. Similarly to the classical attachment mode used in structural mechanics [10–12], all these techniques use a boundary mode which is not a local transverse mode but that encapsulates the less convergent part of the series. Nevertheless, these techniques are not well suited to implement the multimodal admittance method for varying cross section waveguide. This is because it is not possible to define a radiation condition on the boundary mode.

Following the results presented in a recent paper [13], an improved version of the multimodal admittance method is presented, using the idea of a boundary mode. It is based on an enriched modal expansion of the pressure, as in [7–9,13]. The pressure is projected on $N + 1$ transverse functions associated to $N + 1$ components. The first N transverse functions are chosen as the local transverse modes, corresponding to the solutions in a waveguide with constant cross section equal to the local cross section. The choice of the supplementary $(N + 1)$ th transverse function is the key point of our improved method. As in [7–9,13] it is chosen to absorb the less convergent part of the series representing the pressure, but the novelty is that we take it to be orthogonal to the first N local transverse modes. When projecting the wave equation on these $(N + 1)$ transverse functions, this latter property ensures that the coupled mode equations take the following classical form : the identity matrix appears in front of the higher order differential terms and more importantly the boundary mode appears as an evanescent mode. Regarding the multimodal admittance method, this allows us to follow the usual formalism by defining a radiation condition at the outlet for this boundary mode; since this mode is evanescent, it is sufficient to impose exponentially decreasing behavior (as with any evanescent mode). Using this property, it is then straightforward to implement the multimodal admittance method.

The paper is organized as follow. In Section II, we present the formulation of the improved multimodal admittance method for waveguides with varying cross section. It is shown that, when the boundary mode is introduced, the coupled mode equations with a boundary mode, Eq. (2.7), keep the same form as the coupled mode equations without boundary mode. Thus, the whole formalism of the multimodal admittance method is conserved. Both the 2D and the 3D axisymmetric cases are considered. Section III focuses on the convergence of the improved modal method compared to the classical modal method. We show a much better improvement in the convergence of the scattering coefficients than on the pressure field, leading to what may be called a superconvergence of the scattering. Preceding the concluding remarks, a discussion on previous works implementing a modal method with a boundary mode is presented in Section IV.

2. Improved admittance method

The propagation of linear acoustic waves in a waveguide with rigid walls is considered in the harmonic regime. The time dependence $e^{-i\omega t}$ is omitted in the following. For the sake of comprehensiveness, the 2D and 3D axisymmetric cases are detailed in the following.

(a) 2D case

We start from the Helmholtz equation,

$$(\Delta + k^2)p(x, y) = 0, \quad (2.1)$$

with Neumann boundary condition on the lower straight wall $\partial_y p(x, 0) = 0$ and on the varying upper wall $\partial_n p(x, h(x)) = 0$ (Fig. 1). Defining $u \equiv \partial_x p$, it can be written as a first order equation along the x axis of the waveguide

$$\partial_x \begin{pmatrix} p \\ u \end{pmatrix} = \begin{pmatrix} 0 & 1 \\ -(\partial_y^2 + k^2) & 0 \end{pmatrix} \begin{pmatrix} p \\ u \end{pmatrix}, \quad (2.2)$$

with boundary conditions

$$\begin{cases} \partial_y p(x, 0) = 0, \\ \partial_y p(x, h) = h'(x)u(x, h). \end{cases} \quad (2.3)$$

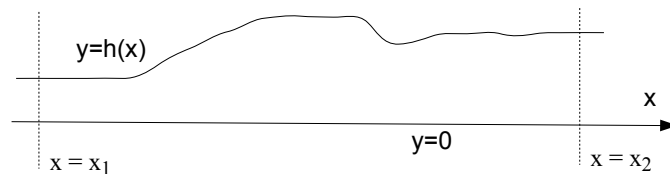


Figure 1. Geometry of the waveguide with varying cross section, here in two dimensions.

In the spirit of coupled mode equations, expansions of p and u onto transverse functions $\varphi_n(y; x)$ are written as

$$\begin{cases} p(x, y) = \sum_{n=0}^{N-1} p_n(x)\varphi_n(y; x) + p_{-1}(x)\varphi_{-1}(y; x), \\ u(x, y) = \sum_{n=0}^{N-1} u_n(x)\varphi_n(y; x) + u_{-1}(x)\varphi_{-1}(y; x), \end{cases} \quad (2.4)$$

The N functions φ_n , $0 \leq n \leq (N-1)$, are the usual local transverse modes. They correspond to the eigenfunctions of the transverse eigenproblem $\partial_y^2 \varphi_n = -\gamma_n^2 \varphi_n$, with the homogeneous Neumann boundary condition on the walls $\partial_y \varphi_n(0; x) = \partial_y \varphi_n(h(x); x) = 0$ (the associated eigenvalue is $\gamma_n = n\pi/h$),

$$\varphi_n(y; x) = \sqrt{\frac{2 - \delta_{n0}}{h(x)}} \cos \frac{n\pi y}{h(x)}. \quad (2.5)$$

Here, for the improved method, the $(N+1)$ th function φ_{-1} is not a local transverse mode but it will be chosen as a function orthogonal to the modes φ_n , $0 \leq n \leq (N-1)$, with the particular boundary conditions $\partial_y \varphi_{-1}(h(x); x) \neq 0$ and $\partial_y \varphi_{-1}(0; x) = 0$. This choice is meant to better

account for the boundary condition (2.3) at $y = h$ that cannot be satisfied by the local transverse modes. It is very easy to write such a boundary mode for any order of truncation N

$$\begin{cases} \varphi_{-1} = \chi - \sum_{n=0}^{N-1} \chi_n \varphi_n, \\ \chi_n \equiv (\chi, \varphi_n), \end{cases} \quad (2.6)$$

where $(f, g) \equiv \int_0^{h(x)} dy \bar{f}(y)g(y)$ denotes the scalar product. Any χ with $\partial_y \chi(h(x); x) \neq 0$ and $\partial_y \chi(0; x) = 0$ is possible and in the following, we have chosen

$$\chi(y; x) = a_N \sqrt{\frac{2}{h(x)}} \cos \frac{\pi y}{2h(x)},$$

where a_N is a normalization factor such that $\|\varphi_{-1}\| = 1$. Then, to obtain the couple mode equations, we just have to project the wave equation (2.2) on the $(N + 1)$ modes φ_n . Details of the calculations are presented in Appendix A and in Appendix B. Eventually, the coupled mode equations take the form

$$\frac{d}{dx} \begin{pmatrix} \mathbf{p} \\ \mathbf{u} \end{pmatrix} = \begin{pmatrix} -A & \mathbf{I} \\ -K^2 & {}^t A \end{pmatrix} \begin{pmatrix} \mathbf{p} \\ \mathbf{u} \end{pmatrix}, \quad (2.7)$$

with $\mathbf{p} \equiv (p_n)$, $\mathbf{u} \equiv (u_n)$, and where \mathbf{I} is the identity matrix and K is a diagonal matrix with diagonal element given by

$$k_n \equiv \sqrt{k^2 - \|\partial_y \varphi_n\|^2} \quad (2.8)$$

and the coupling matrix A has components

$$A_{nm} \equiv (\varphi_n, \partial_x \varphi_m). \quad (2.9)$$

The square root is chosen with positive real part or with positive imaginary part. For $0 \leq n \leq (N - 1)$, $k_n = \sqrt{k^2 - (n\pi/h)^2}$ correspond to the usual horizontal wavenumbers of the modes in the straight part of the waveguide. k_{-1}^2 is found negative (assuming of course that the truncation includes all the propagative modes), k_{-1} is imaginary, representing an evanescent part of the wavefield. As N is increased, it is more and more evanescent as can be seen in the explicit expression obtained from (2.8)

$$k_{-1}^2 = k^2 - (\|\partial_y \chi\|^2 - \sum_{n=0}^{N-1} \gamma_n^2 \chi_n^2), \quad (2.10)$$

which implies that $k_{-1}^2 \propto -N^2$ for large N (for details, see [13]).

The coupled mode equations (2.7) with the boundary mode (as well as equations (8) and (9)) have exactly the same form as the coupled mode equations without boundary mode [6]. Consequently, from this point, it is straightforward to implement the admittance method following the same steps as in [6]. We first define the admittance matrix Y and the propagator matrix G

$$\mathbf{u} = Y\mathbf{p}, \quad \mathbf{p}(x_f) = G(x)\mathbf{p}(x), \quad (2.11)$$

where x_f is the abscissa of the outlet and $x \leq x_f$. The matrix Y satisfies a Riccati equation, and G a differential equation coupled to Y ,

$$\begin{cases} Y' = -K^2 - Y^2 + YA + {}^t AY, \\ G' = -G(-A + Y). \end{cases} \quad (2.12)$$

Both equations are integrated from the radiation condition at the right part of the waveguide $x = x_f$ with the initial conditions $Y(x_f) = Y_c$ (Y_c is the characteristic admittance defined by $Y_c \equiv iK(x_f)$) and $G(x_f) = \mathbf{I}$. Numerical integration by Magnus method is detailed in [6]. Once the equations (2.12) are integrated up to the inlet $x = x_i$, the reflection and transmission matrices can be calculated. Indeed, the wave can be splitted into right and left going waves $\mathbf{p} = \mathbf{p}^+ + \mathbf{p}^-$

and $\mathbf{u} = \mathbf{Y}_c(\mathbf{p}^+ - \mathbf{p}^-)$, so that the reflection matrix is defined by $\mathbf{p}^-(x_i) = \mathbf{R}\mathbf{p}^+(x_i)$ and the transmission matrix is defined by $\mathbf{p}(x_f) = \mathbf{T}\mathbf{p}^+(x_i)$. Using from Eq. (2.11) $\mathbf{u}(x_i) = \mathbf{Y}(x_i)\mathbf{p}(x_i)$ and $\mathbf{p}^+(x_f) = \mathbf{p}(x_f) = \mathbf{G}(x_i)\mathbf{p}(x_i)$, we get

$$\begin{cases} \mathbf{R} = [\mathbf{Y}_c + \mathbf{Y}(x_i)]^{-1}[\mathbf{Y}_c - \mathbf{Y}(x_i)], \\ \mathbf{T} = \mathbf{G}(x_i)(1 + \mathbf{R}). \end{cases} \quad (2.13)$$

Note that the great advantage of the method is that the matrices \mathbf{Y} and \mathbf{G} do not have to be stored during the integration of the differential equations (2.12). If needed, the solution inside the scattering region, $\mathbf{p}(x_i \leq x \leq x_f)$, can be obtained from the first equation of the coupled mode equations (2.7)

$$\mathbf{p}' = (-\mathbf{A} + \mathbf{Y})\mathbf{p}, \quad (2.14)$$

with the incident wave condition at the left part of the waveguide $x = x_i$.

It is important to remark that the introduction of the boundary mode does not change the formalism of the admittance method: equations (2.7), (2.12) and (2.14) have the same form as for the usual case without boundary mode and from the structure of the coupled mode equations (2.7), the energy conservation is preserved (for details on energy conservation in the multimodal method see [14]).

(b) The 3D axisymmetric case

This case corresponds to the acoustic propagation in rigid ducts, with varying circular cross section (without mean flow). It is similar to the 2D case, with a difference lying only in the form of the transverse Laplacian. We give below only the expressions that are different from the 2D case and all the above remarks for 2D remain valid for the 3D axisymmetric case. The Helmholtz equation is

$$\frac{1}{r} \partial_r (r \partial_r p(z, r)) + \partial_z^2 p(z, r) + k^2 p(z, r) = 0, \quad (2.15)$$

with Neumann boundary condition on the varying wall $\partial_n p(z, h(z)) = 0$. It can be written as a first order equation along the z axis of the waveguide

$$\partial_z \begin{pmatrix} p \\ u \end{pmatrix} = \begin{pmatrix} 0 & 1 \\ -\left(\frac{1}{r} \partial_r r \partial_r + k^2\right) & 0 \end{pmatrix} \begin{pmatrix} p \\ u \end{pmatrix}, \quad (2.16)$$

with boundary condition

$$\partial_r p(z, h) = h'(z)u(z, h). \quad (2.17)$$

The same form of decomposition as in (2.4) are chosen

$$\begin{cases} p(z, r) = \sum_{n=0}^{N-1} p_n(z) \varphi_n(r; z) + p_{-1}(z) \varphi_{-1}(r; z), \\ u(z, r) = \sum_{n=0}^{N-1} u_n(z) \varphi_n(r; z) + u_{-1}(z) \varphi_{-1}(r; z), \end{cases} \quad (2.18)$$

where the $\varphi_n(r; z)$ ($n \geq 0$) defined by

$$\varphi_n(r; z) = \frac{1}{\sqrt{\pi h^2(z)}} \frac{J_0(\beta_n r/h(z))}{J_0(\beta_n)}, \quad (2.19)$$

are the eigenfunctions of the transverse eigenproblem $1/r \partial_r (r \partial_r f_n) = -\gamma_n^2 f_n$ with Neumann boundary condition at $r = h(z)$, $\partial_r f_n(h) = 0$. Here $\gamma_n = \beta_n/h$ and β_n is the $(n+1)$ th zero of J_1 (and J_n denotes the n th Bessel function). The boundary mode, as in 2D, is defined by Eq.

(2.6), with a difference in the definition of the scalar product $(f, g) \equiv \int_0^{h(z)} 2\pi r dr \bar{f}(r)g(r)$ and χ is chosen such that $\partial_r \chi(h(z); z) \neq 0$. The function χ has been chosen as follow

$$\chi(r; z) = \frac{a_N}{\sqrt{\pi h^2(z)}} J_0(\beta r/h(z)),$$

where β is the first zero of J_0 (with 5 digits: $\beta = 2.4048$), and, as in the 2D case, a_N is the normalization factor such that $\|\varphi_{-1}\| = 1$.

Then, following the same steps as in 2D in the previous section, one obtains the same form of coupled mode equations as in (2.7). Only the expressions of the matrices occurring in this equation change: K is a diagonal matrix with diagonal element given by $k_n \equiv \sqrt{k^2 - \|\partial_r \varphi_n\|^2}$ and $A_{nm} \equiv (\varphi_n, \partial_z \varphi_m)$. Equations (2.11) to (2.14) remain valid. Details of the calculations are presented in Appendix C.

3. Toy model

In this section, for the sake of clarity, we consider very simple 1D models to examine two aspects that will be useful in the following. The first is concerned with the improved convergence using boundary modes (a technique which is also called polynomial subtraction [15–17]). The second allows us to illustrate the different types of errors that occur when solving an ordinary differential equation with truncated series.

(a) Improved convergence in 1D

Let us take a function f with sufficient regularity defined on $[0, 1]$. We want to project f on the Neumann modes φ_n defined by $\varphi_n'' + \gamma_n^2 \varphi_n = 0$ with $\varphi_n'(0) = \varphi_n'(1) = 0$. These modes φ_n are similar to the ones considered in the waveguide problem. The explicit expression of the normalized φ_n is $\varphi_n(y) = \sqrt{2 - \delta_{n0}} \cos \gamma_n y$ with $\gamma_n \equiv n\pi$. Here, the scalar product is defined by $(f, g) \equiv \int dy f(y)g(y)$. The expansion of f is

$$f(y) = \sum_{n=0}^{\infty} p_n \varphi_n(y). \quad (3.1)$$

Integrations by parts give

$$(\varphi_n'', f) = [\varphi_n' f - \varphi_n f'] + (\varphi_n, f''), \quad (3.2)$$

with $(\varphi_n'', f) = -\gamma_n^2 p_n$, leading to

$$-\gamma_n^2 p_n = -[\varphi_n f'] + (\varphi_n, f''). \quad (3.3)$$

Hence, successive integrations by part give the behavior of the coefficients p_n

$$p_n = \frac{[\varphi_n f']}{\gamma_n^2} - \frac{[\varphi_n f''']}{\gamma_n^4} + \dots \quad (3.4)$$

With $\gamma_n \propto n$, the convergence of the coefficients p_n is $1/n^2$ if f' does not vanish at the boundaries and it is at least $1/n^4$ if it vanishes. The convergence of the truncated series

$$f_N(y) \equiv \sum_{n=0}^N p_n \varphi_n(y), \quad (3.5)$$

is given by the rest

$$R_N \equiv (f - f_N) = \sum_{n=N+1}^{\infty} p_n \varphi_n \quad (3.6)$$

whose norm is

$$\|R_N\|^2 = \sum_{n=N+1}^{\infty} |p_n|^2. \quad (3.7)$$

If f' does not vanish at the boundaries, we have

$$p_n \propto \frac{1}{n^2}, \text{ and thus } \|f - f_N\| \propto \frac{1}{N^{3/2}}. \quad (3.8)$$

More generally, from equation (3.4), it is seen that the convergence of the series is governed by the values of the successive derivatives of the function f at the boundaries. Therefore, it is possible to improve the convergence by introducing a new function g

$$g(y) \equiv f(y) - f'(0)\chi_0(y) - f'(1)\chi_1(y), \quad (3.9)$$

with $\chi_0'(1) = \chi_1'(0) = 0$ and $\chi_0'(0) = \chi_1'(1) = 1$. The function g satisfies by construction $g'(0) = g'(1) = 0$, so that, from (3.4), its coefficients $q_n \equiv (\varphi_n, g)$ behave as $1/n^4$. This polynomial subtraction technique (since χ_0 and χ_1 can be chosen as polynomials) improves the convergence of the series. Indeed, considering the truncated series

$$g_N(y) \equiv \sum_{n=0}^N q_n \varphi_n(y), \quad (3.10)$$

the following behaviors are obtained

$$q_n \propto \frac{1}{n^4}, \text{ and } \|g - g_N\| \propto \frac{1}{N^{7/2}}. \quad (3.11)$$

It follows that a truncated series approximation for f can be built, as

$$\hat{f}_N(y) \equiv g_N(y) + f'(0)\chi_0(y) + f'(1)\chi_1(y), \quad (3.12)$$

that satisfies

$$\|f - \hat{f}_N\| = \|g - g_N\| \propto \frac{1}{N^{7/2}}. \quad (3.13)$$

It is the basic idea of the boundary mode method: \hat{f}_N in Eq. (3.12) is a much better approximation of f than f_N in Eq. (3.5) owing to the introduction of the functions χ_0 and χ_1 (known explicitly).

Let us take the concrete example of $f(y) = \cos y$ on $[0, 1]$, satisfying $f'(0) = 0$ and $f'(1) \neq 0$. From (3.4), one knows that $p_n \propto 1/n^2$. Here, the explicit expression of p_n is

$$p_n = \frac{f'(1)\varphi_n(1)}{\gamma_n^2 - 1}, \quad (3.14)$$

and one recovers that $p_n \propto 1/n^2$. To improve the series expansion, the following choice for χ is done: $\chi(y) \equiv \chi_1(y) = y^2/2$ (here, χ_0 is useless for $f'(0) = 0$) and we define $g \equiv f - f'(1)\chi$, as in (3.9). The coefficients $q_n = (\varphi_n, g)$ are explicit

$$q_n = p_n - f'(1)\chi_n = \frac{f'(1)\varphi_n(1)}{\gamma_n^2(\gamma_n^2 - 1)}, \quad (3.15)$$

for $n > 0$, where

$$\chi_n \equiv (\varphi_n, \chi) = \frac{\varphi_n(1) - \delta_{n0}}{\gamma_n^2}. \quad (3.16)$$

Eventually, the truncated series

$$\hat{f}_N(y) = \sum_{n=0}^N q_n \varphi_n(y) + f'(1)\chi(y), \quad (3.17)$$

converges as

$$\|f - \hat{f}_N\| = \sqrt{\sum_{n=N+1}^{\infty} q_n^2} \propto \frac{1}{N^{7/2}}. \quad (3.18)$$

We see that it is very simple to improve the convergence by the technique of polynomial subtraction when $f'(1)$ is known. In the present paper, the improved multimodal method uses the same kind of ideas in a more involved situation, where one has to solve a partial differential

equation with $f'(1)$ unknown. The procedure consists in introducing an extra degree of freedom p_{-1} , replacing $f'(1)$ in (3.17), and supposed to approximate $f'(1)$. As another remark, note that the decomposition (3.17) can be rewritten

$$\hat{f}_N(y) = \sum_{n=0}^N [q_n + f'(1)\chi_n] \varphi_n(y) + f'(1) \left[\chi(y) - \sum_{n=0}^N \chi_n \varphi_n(y) \right]. \quad (3.19)$$

This choice has the advantage of dealing with orthogonal functions, the φ_n ($n \leq N$) and the function $\left[\chi(y) - \sum_{n=0}^N \chi_n \varphi_n(y) \right]$ (what we call loosely a boundary mode). This is the same form as the expansion chosen in Eq. (2.4). This makes the projection easier, and this is the choice made for the improved multimodal method in the waveguide.

(b) Boundary value problem: remainder error and coefficient error

Let us consider the following boundary value problem

$$f''(y) + f(y) = 0, \quad (3.20)$$

with

$$f'(0) = 0, \text{ and } f'(1) = \alpha f(1) + \beta, \quad (3.21)$$

where $\alpha = -\tan(1)/2$ and $\beta = -\sin(1)/2$, such that $f(y) = \cos y$ is the known exact solution. The numerical solution \tilde{f}_N is sought as a N th partial sum approximation

$$\tilde{f}_N(y) = \sum_{n=0}^N \tilde{p}_n \varphi_n(y), \quad (3.22)$$

with $\varphi_n(y)$ the same Neumann modes as in the previous section. To obtain the equations on \tilde{p}_n , one uses the Galerkin method by projecting the equation (3.20) on the φ_n (for $n \leq N$). One gets

$$(1 - \gamma_n^2) \tilde{p}_n = -\varphi_n(1) f'(1), \quad (3.23)$$

where the following properties have used: $f'(0) = 0$, $(\varphi_n, f) = p_n$, $\varphi_n'' = -\gamma_n^2 \varphi_n$ and the integration by parts

$$(\varphi_n, f'') = \varphi_n(1) f'(1) - \gamma_n^2 \tilde{p}_n.$$

Then, it is sufficient to use the boundary condition at $y = 1$ to obtain the linear system governing the \tilde{p}_n

$$\sum_{m=0}^N \left[(1 - \gamma_n^2) \delta_{mn} + \alpha \varphi_n(1) \varphi_m(1) \right] \tilde{p}_m = -\beta \varphi_n(1), \quad (3.24)$$

for $0 \leq n \leq N$. It is a system of $(N + 1)$ equations with $(N + 1)$ unknowns \tilde{p}_n that can be solved by a standard inversion technique. The error between the exact solution $f(y)$

$$f(y) = \sum_{n=0}^{\infty} p_n \varphi_n(y). \quad (3.25)$$

and the numerical Galerkin solution \tilde{f}_N (3.22) can be written as the sum of two parts:

$$f - \tilde{f}_N = \sum_{n=0}^N [p_n - \tilde{p}_n] \varphi_n + \sum_{n=N+1}^{\infty} p_n \varphi_n. \quad (3.26)$$

The second part in the left-hand side, denoted $R_N(y)$, is the remainder error corresponding to the distance between f and the set spanned by the functions $\varphi_0, \dots, \varphi_N$. The first part in the left-hand side is the coefficient error r_N : let us see where does it comes from. Equation (3.23) is exact but

the elimination of $f'(1)$ using $f(1) = \sum_{n=0}^N \tilde{p}_n \varphi_n(1)$ is not exact. It is possible to write an exact system by using $f(1) = \sum_{n=0}^{\infty} p_n \varphi_n(1)$. More precisely, one writes

$$f'(1) = \alpha \left[\sum_{n=0}^N p_n \varphi_n(1) + R_N(1) \right] + \beta. \quad (3.27)$$

Thus, from (3.23) and (3.27), the exact coefficients p_n ($0 \leq n \leq N$) satisfy the exact linear system of $(N+1)$ equations

$$\left[(1 - \gamma_n^2) \delta_{mn} + \alpha \sum_{m=0}^N \varphi_n(1) \varphi_m(1) \right] p_m = -\beta \varphi_n(1) - \alpha \varphi_n(1) R_N(1). \quad (3.28)$$

It appears that the coefficients \tilde{p}_n and p_n in the coefficient error (3.26) obey two different systems of equations (3.24) and (3.28). These two systems can be written formally as

$$\begin{aligned} \mathbf{M} \tilde{\mathbf{p}} &= \mathbf{S}, \\ \mathbf{M} \mathbf{p} &= \mathbf{S} + \mathbf{T}, \end{aligned} \quad (3.29)$$

with $M_{nm} \equiv \left[(1 - \gamma_n^2) \delta_{mn} + \alpha \varphi_n(1) \varphi_m(1) \right]$, $S_n \equiv -\beta \varphi_n(1)$, $T_n \equiv -\alpha \varphi_n(1) R_N(1)$ and with $\mathbf{p} = (p_0, \dots, p_N)^T$, $\tilde{\mathbf{p}} = (\tilde{p}_0, \dots, \tilde{p}_N)^T$. Thus, the coefficient error is

$$p_n - \tilde{p}_n = \left[\mathbf{M}^{-1} \mathbf{T} \right]_n. \quad (3.30)$$

In the present specific example, the exact solution is $f(y) = \cos y$, such that \mathbf{T} is known and the coefficient error in (3.26) can be calculated by numerical inversion of M . The convergence is calculated and it can be summarized as follow

$$f - \tilde{f}_N = \underbrace{\sum_{n=0}^N [p_n - \tilde{p}_n] \varphi_n}_{\|r_N\| \propto N^{-3}} + \underbrace{\sum_{n=N+1}^{\infty} p_n \varphi_n}_{\|R_N\| \propto N^{-3/2}}, \quad (3.31)$$

where the coefficient error and the remainder error have been calculated with the norm L^2 . In this simple example, the coefficient error r_N is smaller than the remainder error R_N . For the waveguide problem, it will be shown that this is not always the case.

4. Results

In this section, the improved admittance multimodal method is applied for the 3D axisymmetric case. The computation are performed following the steps presented in Section II. We have checked that the same conclusions are drawn for the 2D case.

To begin with, it is shown that the use of the impedance matrix method implemented with the boundary mode allows us to reach a high accuracy with very few degrees of freedom. A typical example is reported in Fig. 2 at a frequency ($kh_0 = 7$, $h_0 = 1$ being the height of the right lead) just below the cut-on frequency of the third mode in the right lead, so that there are two propagating modes in the right lead and one propagating mode in the left lead. The method is performed with $N_m = N + 1 = 4$ degrees of freedom, achieving an accuracy better than 1% on the scattering coefficient. The incident wave is mode 0 from the left and outgoing boundary condition is imposed at the right.

In the following, the convergence of the improved method is examined with respect to the wave field and with respect to the scattering coefficients, where a superconvergence will be

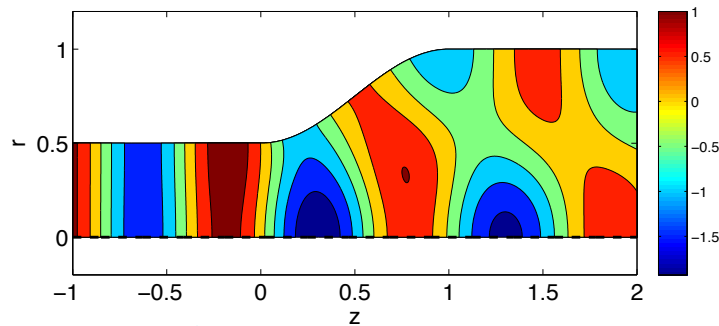


Figure 2. Example of wave field obtained with $N = 3$ ($N_m = 4$ modes). Here the axisymmetric geometry is $h(z \leq 0) = 0.5$, $h(0 < z < 1) = 0.75 - 0.25 \cos \pi z$ and $h(z \geq 1) = 1$. The frequency is $kh_0 = 7$ with $h_0 = 1$, just below the cut-on frequency of the third mode $\beta_2 = 7.0156$. The incident wave is plane.

shown. To do that, the geometry of a cosine waveguide is considered, namely

$$\begin{cases} h(z) = 1, & \text{for } |z| > 1, \\ h(z) = 1.4 + 0.4 \cos \pi z, & \text{for } |z| \leq 1. \end{cases} \quad (4.1)$$

Except for the result in Figure 7, the frequency is $kh_0 = 0.9\pi$ with $h_0 = 1$, which corresponds to one propagating mode in the leads. Moreover, the mode 0 is incident from the left and the outgoing boundary condition is imposed at the right.

Let us first examine the asymptotic behavior of the modal coefficients. Eqs. (2.4) and (2.6) show that

$$p(z, r) = \sum_{n=0}^{N-1} q_n(z) \varphi_n(r; z) + p_{-1}(z) \chi(r; z). \quad (4.2)$$

with

$$q_n \equiv p_n - (\chi, \varphi_n) p_{-1}, \quad (4.3)$$

The expansions (4.2) and (2.4) correspond respectively to the expansions (3.17) and (3.19). As seen in the toy model section, the coefficients q_n are expected to decrease more quickly than the coefficients p_n (Eqs. (3.11) and (3.8)). In our impedance multimodal method, the system is solved on the coefficients p_n that are found to follow $p_n \propto 1/n^2$ (Fig. 3). Nevertheless, when q_n is computed from Eq. (4.3), the behavior $q_n \propto 1/n^4$ is actually recovered [7,8,13].

Next, the local and global errors on the field are defined by

$$\epsilon_N(z, r) \equiv |p(z, r) - p^{ex}(z, r)|^2, \quad (4.4)$$

and

$$\epsilon_N \equiv \int_V dV |p(z, r) - p^{ex}(z, r)|^2 / \int_V dV |p^{ex}(z, r)|^2, \quad (4.5)$$

where $p(z, r)$ is the solution calculated at order N (Eq. (2.4), *i.e.* with $N_m = N + 1$ coefficients) and $p^{ex}(z, r)$ the converged solution considered to be exact. In order to assess the advantage of the boundary mode, the usual multimodal method without boundary mode is considered, using the expansion

$$p^{noBM}(z, r) = \sum_{n=0}^N p_n(z) \varphi_n(r; z), \quad (4.6)$$

whose corresponding local and global errors are defined as in Eqs. (4.4) and (4.5). Note that the above expression Eq. (4.6) has $(N + 1)$ components on the classical transverse modes φ_n ; it has been chosen as such in order to have the same number of degrees of freedom $N_m = N + 1$.

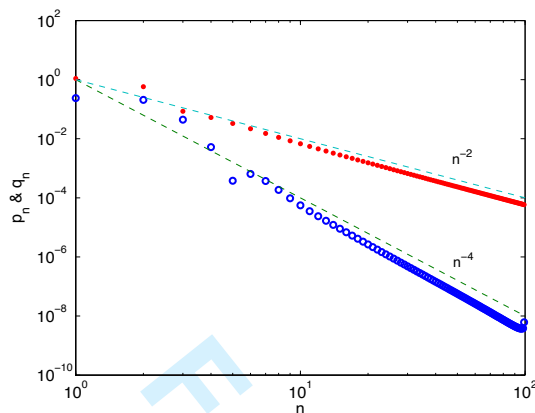


Figure 3. Convergence of the projection coefficients p_n (points) and q_n (circles) as a function of n (the geometry is defined in Eq. (4.1)).

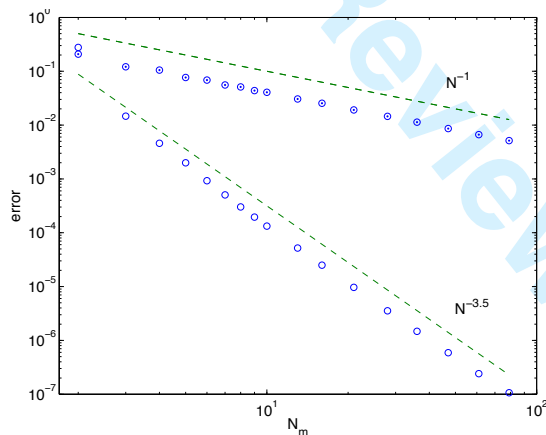


Figure 4. Convergence of the global error as a function of the truncature N_m for the multimodal method without (dotted circles) or with (circles) the boundary mode (the geometry is defined in Eq. (4.1)).

The rates of convergence of the global errors are shown on Fig 4 as a function of the total number of transverse functions taken into account (number of modes plus the boundary mode in the case of the improved method and number of modes in the case of the usual multimodal method). The rate of convergence is $1/N$ for the usual method and $1/N^{3.5}$ for the improved method.

In order to get further insights on the non uniformity of the convergence, it is interesting to inspect the pattern of the local error in space. The real part of the total fields as well as these local errors in space $\epsilon_N(z, \tau)$ are shown on Fig. 5 both for the usual and the improved methods. The total number of modes is $N_m = 10$ in both cases. Both results are close to the reference solution but one can notice spurious wiggles near the boundaries for the computation without boundary mode (of course, the amplitudes of these wiggles decrease with the order of truncation [4]). When plotting the solution (Fig. 5.a), the wiggles appear to be located close to the

inclined wall. It is interesting also to inspect the pattern of the local error for the computation with boundary mode. Indeed, in this case, the pattern of the error presents a characteristic length that corresponds to the first omitted mode. This corresponds to the intuitive idea of the error due to a truncation for series of functions of one variable, namely if $f(z) = \sum f_n \phi_n(z)$, the error is $\epsilon_N = \sum_{n=N+1}^{\infty} f_n \phi_n \simeq f_{N+1} \phi_{N+1}$. *A contrario*, the pattern of the error without boundary mode does not follow this simple behavior. This means that the coefficient error (the modal coefficient depends on N and p_n converges toward its asymptotic value p_n^{ex}) has a non negligible weight, as already discussed in the toy model section.

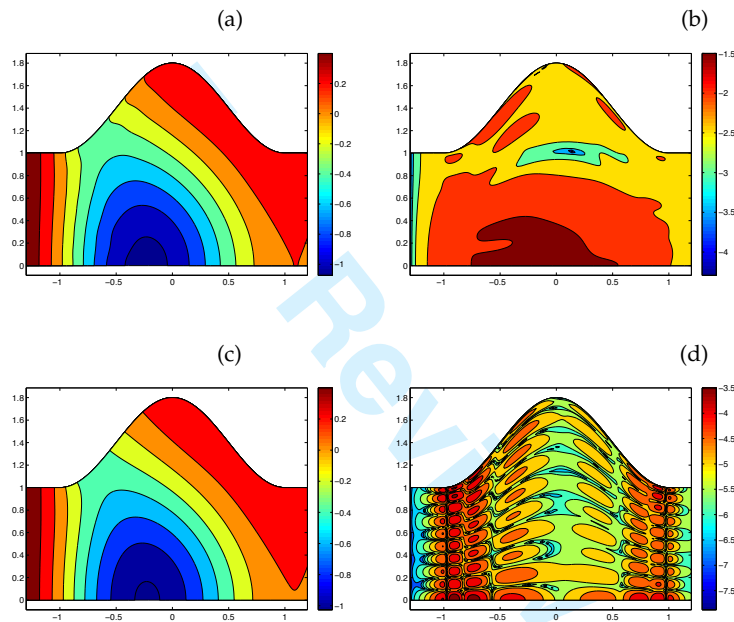


Figure 5. Solution without (a), (b) and with boundary mode (c),(d). At left the solution calculated with $N_m = 10$ and at right the error. The geometry is defined in Eq. (4.1), a plane incident wave is considered.

The next results concern the convergence of the elements of the scattering matrix. These are the most important quantities since usually, one is more interested in obtaining the transmission and reflection coefficients due to the inhomogeneity of the waveguide rather than the detailed pattern of the field inside the scattering region. Note that, to compute the scattering matrix, only the integration of the equations on Y and G are needed. They are evolution equations posed as an initial value problem which means that they do not imply large memory storage. In our computation example, with $kh_0 = 0.9\pi$, only one mode is propagative in the straight terminations of the waveguide so that the scattering is characterized by one transmission coefficient $T = T_{00}$ and one reflection coefficient $R = R_{00}$. Fig. 6 shows the rate of convergence of the transmission coefficient as a function of the total number of transverse modes. Without the boundary mode, the convergence is $|T - T^{ex}| \sim N^{-1}$, and with the boundary mode, the convergence is $|T - T^{ex}| \sim N^{-4.5}$. Moreover, it can be seen that 2 modes and the boundary mode achieve an excellent accuracy that is reached for a truncation around 40 modes using the classical modal method. This is what we call the superconvergence. As a rule of thumb, this excellent accuracy appears to be obtained as soon as the truncation includes the first evanescent mode. In our example, with one propagative mode, this means that the computation includes the propagative mode 0, the first

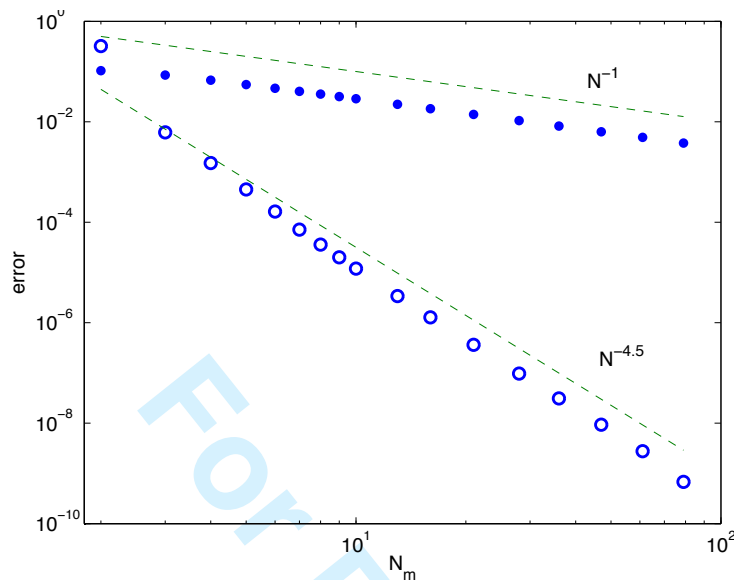


Figure 6. Convergence of the transmission coefficient $|T_{00}|$. The error is plotted as a function of the total number of modes without (filled circle) and with boundary mode (open circle).

evanescent mode 1 and the boundary mode. The Figure 7 illustrates this accuracy in the whole range of frequency below the first cut-on frequency of the termination $k_c = \gamma_1/h_0$ ($\gamma_1 \simeq 3.83$). The error $|T - T^{ex}|$ is plotted as a function of the dimensionless frequency kh_0 in three cases: with and without the boundary mode using $N = 2$ in (4.2) (modes 0, 1 and the boundary mode) and in (4.6) (modes 0, 1 and 2). When comparing the usual multimodal method and the improved multimodal method with the same number of transverse modes (a total of $N_m = 3$ modes in each case), the accuracy is improved by one order of magnitude. Thus, it is observed that the superconvergence of the improved method works uniformly with respect to the frequency.

On the convergence and the superconvergence

Following the idea of the remainder error and of the coefficient error presented in the toy model section, we examine the partition of the error when using the usual or the improved multimodal method. Let us consider the expressions of the pressure field without boundary mode (usual method)

$$p^{noBM}(z, r) = \sum_{n=0}^N p_n(z) \varphi_n(r; z), \quad (4.7)$$

with the boundary mode (improved method)

$$p(z, r) = \sum_{n=0}^{N-1} p_n(z) \varphi_n(r; z) + p_{-1}(z) \varphi_{-1}(r; z), \quad (4.8)$$

and the converged field, considered as an exact solution

$$p^{ex}(z, r) = \sum_{n=0}^{\infty} p_n^{ex}(z) \varphi_n(r; z). \quad (4.9)$$

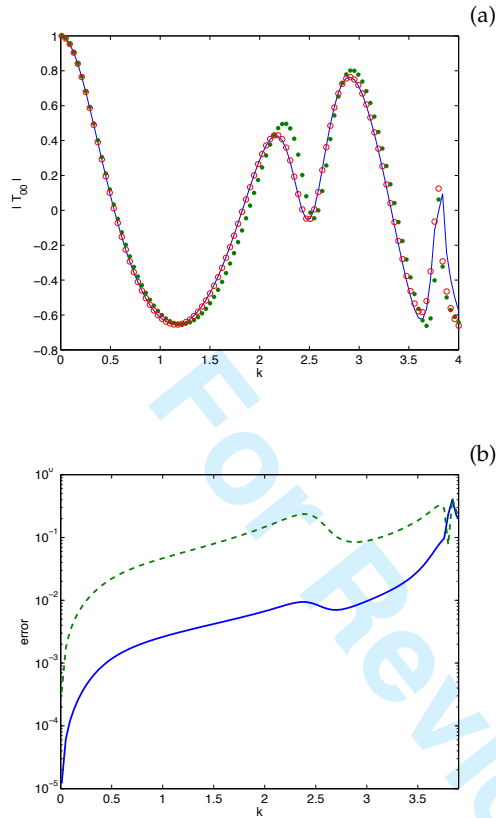


Figure 7. Error on the computed transmission coefficient $|T_{00}|$ as a function of the frequency. In (a) the transmission coefficient $|T_{00}|$ without boundary mode (green points), with boundary mode (red circle) and the converged solution (blue line). In (b) the error without boundary mode (dotted) and with boundary mode (blue line).

To analyze the convergence of the pressure field, the error $|p - p^{ex}|$ is splitted into three parts

$$p^{noBM} - p^{ex} = \underbrace{\sum_{n=0}^{N_p} (p_n - p_n^{ex}) \varphi_n}_{\epsilon_1 \propto N^{-1}} + \underbrace{\sum_{n=N_p+1}^N (p_n - p_n^{ex}) \varphi_n}_{\epsilon_2 \propto N^{-1}} - \underbrace{\sum_{n=N+1}^{\infty} p_n^{ex} \varphi_n}_{\epsilon_3 \propto N^{-1.5}}, \quad (4.10)$$

and with the boundary mode

$$p - p^{ex} = \underbrace{\sum_{n=0}^{N_p} (p_n - p_n^{ex}) \varphi_n}_{\epsilon_1 \propto N^{-4.5}} + \underbrace{\sum_{n=N_p+1}^{N-1} (p_n - p_n^{ex}) \varphi_n}_{\epsilon_2 \propto N^{-3.5}} + \underbrace{p_{-1} \varphi_{-1} - \sum_{n=N}^{\infty} p_n^{ex} \varphi_n}_{\epsilon_3 \propto N^{-3.5}}, \quad (4.11)$$

with $N_p + 1$ the number of propagating modes. ϵ_1 refers to the error on the propagative field and $\epsilon_2 + \epsilon_3$ refers to the error on the evanescent field. The rates of convergence indicated for each term have been obtained numerically. For ϵ_3 , these rates of convergence can be obtained analytically by using the behavior of p_n^{ex} for large n , namely $p_n^{ex} \propto 1/n^2$ and $p_n^{ex} - (\chi, \varphi_n) p_{-1} \propto 1/n^4$. Also, it appears that without boundary mode, ϵ_1 and ϵ_2 are dominant whereas with boundary mode ϵ_2 and ϵ_3 are dominant.

These rates of convergence are observed in the varying part of the waveguide, but, in the straight parts of the waveguide, only ϵ_1 subsists there, because ϵ_2 and ϵ_3 become exponentially small (they are associated with evanescent modes). Consequently, the error in the straight parts is given by ϵ_1 and the rate of convergence can be different inside and outside the scattering region. Importantly, it turns out that the addition of the boundary mode improves more significantly the rate of convergence of the propagative part of the field (from N^{-1} to $N^{-4.5}$) than the rate of convergence of the evanescent part of the field (from N^{-1} to $N^{-3.5}$). This explains the superconvergence observed for the scattering coefficients since they are defined from the propagative modes outside the scattering region.

5. Coupled formulation of the improved method

In our improved multimodal decomposition

$$p(z, r) = \sum_{n=0}^{N-1} p_n(z) \varphi_n(r; z) + p_{-1}(z) \left[\chi(r; z) - \sum_{n=0}^{N-1} (\chi, \varphi_n) \varphi_n(r; z) \right], \quad (5.1)$$

p_{-1} is found to be an evanescent mode, with an imaginary wavenumber k_{-1} that tends to infinity as $N \rightarrow \infty$. Also, it can be noticed that an uncoupled system of equations on the (p_n) is obtained in the straight parts of the waveguide (namely $p_n'' + k_n^2 p_n = 0$, for $n = -1, \dots, N$ that can be written $\mathbf{p}'' + K^2 \mathbf{p} = \mathbf{0}$).

Previous works on improved multimodal methods used also a boundary mode [7,8]. Nevertheless, the decomposition was written differently, with a boundary mode non orthogonal to the first N ones

$$p(z, r) = \sum_{n=0}^{N-1} q_n(z) \varphi_n(r; z) + q_{-1}(z) \chi(r; z). \quad (5.2)$$

For the same function $\chi(r; z)$, the two modal decompositions coincide owing to Eq. (4.3) and $p_{-1} = q_{-1}$. The decomposition, Eq. (5.2), leads to coupled mode equations on $\mathbf{q} \equiv (q_n)$

$$\mathbf{B}\mathbf{q}'' + \mathbf{C}\mathbf{q}' + \mathbf{D}\mathbf{q} = \mathbf{0}. \quad (5.3)$$

In the straight parts of the waveguide, $\mathbf{C} = \mathbf{0}$ but \mathbf{B} and \mathbf{D} remain non diagonal matrices inducing a coupling that makes the implementation of the admittance method not straightforward, if not problematic. The approach chosen in [7,8] is to pose the coupled mode equations as a boundary value problem with Dirichlet boundary condition on q_{-1} . In view of our work, we propose an interpretation of this boundary condition based on an analogy with the Perfectly Matched Layers (PML). Indeed, since q_{-1} is evanescent in the straight parts of the waveguide, the straight terminations of the waveguide play the role of PML with $q_{-1} \sim e^{-|k_{-1}|L}$ decreasing with the size L of the PML.

If L is large enough, the choice $q_{-1} = 0$ at the end of the PML is similar to the outgoing radiation condition for q_{-1} that is used in the present paper. Also, because $|k_{-1}| \propto N$, increasing the order of the truncation N makes to decrease the necessary size L of the PML.

Results in [7,8] -BVP with Dirichlet boundary conditions on q_{-1} - have shown an improvement of the convergence inside the scattering region of the same kind as the one we obtain in this paper. It could be interesting to know if, for small N , the accuracy is the same as in our method and if the superconvergence for scattering coefficient that we obtain might be also observed with Dirichlet boundary condition on q_{-1} .

6. Concluding remarks

The introduction of a boundary mode in the multimodal admittance method has been shown to improve significantly the efficiency of the method for acoustic waveguides with varying cross section. The convergence of the pressure field inside the varying part of the waveguide is increased but more importantly, a superconvergence is obtained on the scattering coefficients,

from $1/N$ to $1/N^{4.5}$. Moreover, this asymptotic rate of convergence is accompanied by an error that is already small at small N . It means that a great accuracy can be reached by just integrating the Riccati equation on the admittance and the evolution equation on the propagator - without the need of memory storage along the axis - with a small number of modes. Typically, at low frequency, taking three degrees of freedom achieves an accuracy better than 1% on the reflection and transmission coefficients (e.g. Fig. 7).

Acknowledgment

We acknowledge Eric Luneville and Christophe Hazard for fruitful discussions. This work has been supported by the Agence Nationale de la Recherche through the grant ANR ProCoMedia, project ANR-10-INTB-0914.

A. Coupled mode equations

To obtain the coupled mode equations, equation (2.2) is projected on the $(N + 1)$ modes φ_n . For the first equation $\partial_x p = u$, the projection is $(\partial_x p, \varphi_n) = \sum_m (p'_m \varphi_m + p_m \partial_x \varphi_m, \varphi_n) = p'_n + \sum_m (\varphi_n, \partial_x \varphi_m) p_m$. That yields the first coupled mode equation

$$p'_n = u_n - \sum_m (\varphi_n, \partial_x \varphi_m) p_m.$$

For the second equation $\partial_x u = -(\partial_{y^2} + k^2)p$, the calculation is as follow. Integrating by part leads to

$$(\partial_{y^2} p, \varphi_n) = [\partial_y p \varphi_n]_0^h - (\partial_y p, \partial_y \varphi_n) = h' u(x, h) \varphi_n(h; x) - \sum_m (\partial_y \varphi_n, \partial_y \varphi_m) p_m,$$

where the boundary conditions $\partial_y p(x, 0) = 0$ and $\partial_y p(x, h) = h' u(x, h)$ have been used. Then for $0 \leq n \leq N - 1$ (and $-1 \leq m \leq N - 1$),

$$(\partial_y \varphi_n, \partial_y \varphi_m) = [\partial_y \varphi_n \varphi_m]_0^h - (\partial_{y^2} \varphi_n, \varphi_m) = \gamma_n^2 \delta_{nm}.$$

By using the symmetry of $(\partial_y \varphi_n, \partial_y \varphi_m)$ it appears that $(\partial_y \varphi_n, \partial_y \varphi_m) = \gamma_n^2 \delta_{nm}$, for any $-1 \leq n \leq N$ and $-1 \leq m \leq N$. Inserting this result into the projection of the second equation gives

$$u'_n = -(k^2 - \gamma_n^2) p_n - \sum_m (\varphi_n, \partial_x \varphi_m) u_m - h' \sum_m \varphi_n(h; x) \varphi_m(h; x) u_m.$$

This equation can be simplified owing to the normalization of the modes $(\varphi_n, \varphi_m) = \delta_{nm}$ that when differentiated with respect to x gives $(\varphi_n, \partial_x \varphi_m) + (\partial_x \varphi_n, \varphi_m) + h' \varphi_n(h; x) \varphi_m(h; x) = 0$. Eventually the second coupled mode equation is

$$u'_n = -(k^2 - \gamma_n^2) p_n + \sum_m (\varphi_m, \partial_x \varphi_n) u_m.$$

B. Expressions for the 2D case

(a) The boundary mode

The function χ is chosen such that $\chi(y; x) = a_N \hat{\chi}(y; x)$ where a_N is a normalization factor to be found and where

$$\hat{\chi}(y; x) = \sqrt{\frac{2}{h}} \cos \frac{\pi y}{2h}.$$

The projection of $\hat{\chi}$ on the eigenmodes φ_n ($\varphi_n(y; x) = \sqrt{\epsilon_n/h} \cos n\pi y/h$ with $\partial_y \varphi_n = 0$ at $y = 0$ and $y = h$ and where $\epsilon_n = 2 - \delta_{n0}$) is obtained by an integration by parts

$$(\hat{\chi}, \partial_{y^2} \varphi_n) = [-\partial_y \hat{\chi} \varphi_n]_0^h + (\partial_{y^2} \hat{\chi}, \varphi_n).$$

With $\partial_y \hat{\chi}(0; x) = 0$ and $\partial_{y^2} \hat{\chi} + \gamma^2 \hat{\chi} = 0$ ($\gamma = \pi/2h$), one gets $\hat{\chi}_n = (\hat{\chi}, \varphi_n) = \partial_y \hat{\chi}(h; x) \varphi_n(h; x) / (\gamma_n^2 - \gamma^2)$. Thus, the explicit expression for $\hat{\chi}_n$ is

$$\hat{\chi}_n = \frac{-1}{2\pi} \frac{\sqrt{2\epsilon_n} (-1)^n}{n^2 - 1/4}.$$

A function orthogonal to φ_n ($0 \leq n \leq N$) is $\hat{\varphi}_{-1} = \hat{\chi} - \sum_0^N \hat{\chi}_n \varphi_n$ with $\|\hat{\varphi}_{-1}\|^2 = 1 - \sum_0^N \hat{\chi}_n^2$. The boundary mode φ_{-1} is normalized

$$\varphi_{-1} = \frac{\hat{\varphi}_{-1}}{\|\hat{\varphi}_{-1}\|}, \quad \text{with} \quad a_N = \frac{1}{\|\hat{\varphi}_{-1}\|}.$$

(b) Transverse wavenumber $\|\partial_y \varphi_n\|^2$

For the usual modes, $0 \leq n \leq (N-1)$, we have $\|\partial_y \varphi_n\|^2 = \gamma_n^2 = n^2 \pi^2 / h^2$.

To compute $\|\partial_y \varphi_{-1}\|^2$ an integration by parts is used

$$\begin{aligned} \|\partial_y \varphi_{-1}\|^2 &= [\partial_y \varphi_{-1} \varphi_{-1}]_0^h - (\varphi_{-1}, \partial_y^2 \varphi_{-1}) \\ &= \partial_y \chi(h) \left(- \sum_{n=0}^{N-1} \chi_n \varphi_n(h; x) \right) - \left(\varphi_{-1}, \partial_y^2 \chi - \sum_{n=0}^{N-1} \chi_n \partial_y^2 \varphi_n \right) \\ &= -\partial_y \chi(h) \sum_{n=0}^{N-1} \chi_n \varphi_n(h; x) + \gamma^2 (\varphi_{-1}, \varphi_{-1}), \end{aligned}$$

so that $\|\partial_y \varphi_{-1}\|^2 = \gamma^2 - \partial_y \chi(h; x) \sum_{n=0}^{N-1} \chi_n \varphi_n(h; x)$. The explicit expression is

$$\|\partial_y \varphi_{-1}\|^2 = \frac{\pi^2}{4h^2} \left[1 - \frac{\sum_{n=0}^{N-1} \epsilon_n / (n^2 \pi^2 - \pi^2/4)}{1 - \sum_{n=0}^{N-1} \hat{\chi}_n^2} \right].$$

(c) The coupling matrix A

The elements of the coupling matrix are defined by

$$A_{nm} = (\varphi_n, \partial_x \varphi_m) = \frac{h'}{h} Q_{nm},$$

where the Q_{nm} are constant, and with, for $0 \leq n \leq (N-1)$, $0 \leq m \leq (N-1)$

$$\left\{ \begin{array}{l} Q_{nn} = -\frac{\epsilon_n}{2}, \\ Q_{-1,-1} = -\frac{1}{2} \left(\sum_{n=0}^{N-1} \chi_n \sqrt{\epsilon_n} (-1)^n \right)^2, \\ Q_{nm} = -\sqrt{\epsilon_n \epsilon_m} \frac{(-1)^{n+m} m^2}{m^2 - n^2}, \quad \text{if } n \neq m, \\ Q_{-1,m} = -\sum_{n=0}^N \chi_n Q_{nm} + \frac{1}{m^2 \pi^2 - \pi^2/4} \left(\frac{\pi \sqrt{\epsilon_m} (-1)^m}{\|\hat{\varphi}_{-1}\|} + 2\chi_m m^2 \pi^2 \right), \\ Q_{n,-1} = -Q_{-1,n} + (-1)^n \sqrt{\epsilon_n} \sum_{p=0}^{N-1} \chi_p \sqrt{\epsilon_p} (-1)^p. \end{array} \right. \quad (\text{A } 1)$$

In these expressions, $\epsilon_n \equiv 2 - \delta_{n0}$ and

$$\chi_n = \frac{1}{\sqrt{1 - \sum_0^N \hat{\chi}_n^2}} \hat{\chi}_n, \quad \text{with} \quad \hat{\chi}_n = \frac{-1}{2\pi} \frac{\sqrt{2\epsilon_n} (-1)^n}{n^2 - 1/4}.$$

To derive these expressions, the following relations have been used. For diagonal elements, differentiating the normalization condition ($\|\varphi_n\|^2 = 1$) with respect to x gives $2(\varphi_n, \partial_x \varphi_n) + h' \varphi_n^2(h; x) = 0$. For non-diagonal elements, $n \neq m$, successive integrations by parts have been used. For non-diagonal elements with $n = -1$ and $0 \leq m \leq (N-1)$ (the row number -1), successive integrations by parts yield can be used. For instance, one finds as intermediate result

$$A_{-1,m} = - \sum_0^N \chi_n A_{nm} + \frac{1}{\gamma_m^2 - \gamma^2} \left[\partial_y \chi(h; x) \partial_x \varphi_m(h; x) - (\gamma_m^2)' \chi_m \right].$$

To obtain $A_{n,-1}$, it is sufficient to use the differentiation *w.r.t.* x of the mode orthogonality $(\varphi_n, \varphi_{-1}) = 0$ to get $(\varphi_n, \partial_x \varphi_{-1}) + (\varphi_{-1}, \partial_x \varphi_n) + h' \varphi_n(h; x) \varphi_{-1}(h; x) = 0$, which implies

$$A_{n,-1} = -A_{-1,n} - h' \varphi_n(h; x) \varphi_{-1}(h; x).$$

C. Expressions for the axisymmetric case

(a) The boundary mode

The transverse modes $\varphi_n(r; z)$ ($0 \leq n \leq (N-1)$) are defined by

$$\varphi_n(r; z) = \frac{1}{\sqrt{\pi h^2(z)}} \frac{J_0(\beta_n r/h(z))}{J_0(\beta_n)},$$

where β_n is the $(n+1)$ th zero of J_1 (with 5 digits: $\beta_0 = 0, \beta_1 = 3.8317, \beta_2 = 7.0156, \beta_3 = 10.1735$...), J_n denotes the n th Bessel function and $f_n = J_0(\gamma_n r)$ with $\gamma_n = \beta_n/h$ are eigenfunctions of the transverse eigenproblem $1/r \partial_r (r \partial_r f_n) = -\gamma_n^2 f_n$. The definition of the scalar product is $(f, g) \equiv \int_0^{h(z)} 2\pi r dr \bar{f}(r) g(r)$. To build the boundary mode φ_{-1} , χ is chosen such as $\partial_r \chi(r=h; z) \neq 0$ and in the following,

$$\chi(r; z) = a_N \hat{\chi}(r; z), \quad \text{with } \hat{\chi}(r; z) = \frac{J_0(\beta r/h(z))}{\sqrt{\pi h^2}},$$

where β is the first zero of J_0 (with 5 digits: $\beta = 2.4048$) and where a_N is the normalization factor such that $\|\varphi_{-1}\| = 1$. The projection of $\hat{\chi}$ on the eigenmodes φ_n is obtained as in the 2D case by an integration by parts: $\hat{\chi}_n = (\hat{\chi}, \varphi_n) = 2\pi h \partial_r \hat{\chi}(r; h) \varphi_n(r; h) / (\gamma_n^2 - \gamma^2)$, where $\gamma_n = \beta_n/h$ and $\gamma = \beta/h$. The explicit expression for $\hat{\chi}_n$ is thus

$$\hat{\chi}_n = -\frac{2\beta J_1(\beta)}{\beta_n^2 - \beta^2}.$$

A function orthogonal to the φ_n ($0 \leq n \leq N$) is $\hat{\varphi}_{-1} = \hat{\chi} - \sum_0^{N-1} \hat{\chi}_n \varphi_n$ with $\|\hat{\varphi}_{-1}\|^2 = J_1^2(\beta) - \sum_0^{N-1} \hat{\chi}_n^2$. Therefore we choose $a_N = 1/\|\hat{\varphi}_{-1}\|$ to normalize the boundary mode

$$\varphi_{-1} = \frac{\hat{\varphi}_{-1}}{\|\hat{\varphi}_{-1}\|}.$$

(b) Transverse wavenumber $\|\partial_r \varphi_n\|^2$

For $0 \leq n \leq (N-1)$

$$\|\partial_r \varphi_n\|^2 = \gamma_n^2 = \beta_n^2/h^2.$$

To compute $\|\partial_r \varphi_{-1}\|^2$, integrations by parts give $\|\partial_r \varphi_{-1}\|^2 = \gamma^2 - 2\pi h \partial_r \chi(r; h) \sum_0^{N-1} \chi_n \varphi_n(r; h)$. With $\varphi_n(r; h) = 1/\sqrt{\pi h^2}$ and $\partial_r \chi(r; h) = -\gamma J_1(\beta) \sqrt{\pi h^2}$, the explicit expression is

$$\|\partial_r \varphi_{-1}\|^2 = \frac{\beta^2}{h^2} \left[1 - 4 \frac{J_1^2(\beta) \sum_{n=0}^{N-1} 1/(\beta_n^2 - \beta^2)}{J_1^2(\beta) - \sum_0^{N-1} \hat{\chi}_n^2} \right].$$

(c) The coupling matrix A

As in the two dimensional case, the coupling matrix can be calculated using integration by parts and the elements of A are defined by

$$A_{nm} = (\varphi_n, \partial_z \varphi_m) = \frac{h'}{h} Q_{nm},$$

with, for $0 \leq m, n \leq (N-1)$

$$\left\{ \begin{array}{l} Q_{nm} = -1, \\ Q_{-1,-1} = -\frac{\left(2\beta J_1(\beta) \sum_{n=0}^{N-1} 1/(\beta_n^2 - \beta^2)\right)^2}{J_1^2(\beta) - \sum_{n=0}^{N-1} \hat{\chi}_n^2}, \\ Q_{nm} = -2\frac{\beta_m^2}{\beta_m^2 - \beta_n^2}, \\ Q_{-1,m} = -\sum_{n=0}^{N-1} \chi_n Q_{nm} + \frac{2}{\beta_m^2 - \beta^2} \left(\frac{\beta J_1(\beta)}{\|\hat{\varphi}_{-1}\|} + \chi_m \beta_m^2\right), \\ Q_{n,-1} = -Q_{-1,n} + 2 \sum_{p=0}^{N-1} \chi_p. \end{array} \right. \quad (A 1)$$

In these expressions,

$$\chi_n = \frac{\hat{\chi}_n}{\sqrt{J_1^2(\beta) - \sum_{n=0}^{N-1} \hat{\chi}_n^2}}, \quad \text{with } \hat{\chi}_n = -\frac{2\beta J_1(\beta)}{\beta_n^2 - \beta^2}.$$

References

1. D. Marcuse, Theory of dielectric optical waveguides, New York, Academic Press, Inc., (1974).
2. A.D. Pierce, Extension of the method of normal modes to sound propagation in an almost stratified medium. *J. Acoust. Soc. Am.* 37, 19–27 (1965).
3. A. F. Stevenson, General theory of electromagnetic horns, *J. Appl. Phys.* 22(12), 1447–1460 (1951).
4. V. Pagneux, N. Amir and J. Kergomard, A study of wave propagation in varying cross-section waveguides by modal decomposition. Part I. Theory and validation, *J. Acoust. Soc. Am.* 100 2034–2048 (1996).
5. Y.Y. Lu and J.R. McLaughlin, The Riccati method for the Helmholtz equation, *J. Acoust. Soc. Am.* 100, 1432–1446 (1996).
6. V. Pagneux, Multimodal admittance method and singularity behaviour at high frequencies, *J. Comp. App. Maths.* 234 (6), 1834–1841 (2010).
7. G. A. Athanassoulis and K. A. Belibassakis, A consistent coupled-mode theory for the propagation of small-amplitude water waves over variable bathymetry regions, *J. Fluid Mech.* 389, 275–301 (1999).
8. C. Hazard and E. Lunéville, An improved multimodal approach for non-uniform acoustic waveguides, *IMA Journal of Applied Math.*, 73 (4), 668–690 (2008).
9. W. Bi, V. Pagneux, D. Lafarge, and Y. Aurégan, An improved multimodal method for sound propagation in nonuniform lined ducts, *J. Acoust. Soc. Am.* 122 (1), (2007).
10. D. de Klerk, D. J. Rixen and S. N. Voormeeren, General Framework for Dynamic Substructuring: History, Review and Classification of Techniques, *AIAA J.* 46:5, 1169–1181 (2008).
11. S. Rubin, Improved Component-Mode Representation for Structural Dynamic Analysis, *AIAA J.*, 13 (8), 995–1006 (1975).
12. R. Craig and C. Chang, On the Use of Attachment Modes in Substructure Coupling for Dynamics Analysis, 18th Structures, Structural Dynamics and Material Conference, AIAA Paper 77-405, (1977).
13. J.F. Mercier and A. Maurel, Acoustic propagation in non-uniform waveguides: revisiting Webster equation using evanescent boundary modes, *Proc. Roy. Soc. A*, 469: 20130186 (2013).

14. V. Pagneux and A. Maurel, Lamb wave propagation in elastic waveguides with variable thickness, *Proc. R. Soc. A*, 462: 1315-1339 (2006).
15. A. Iserles and S.P. Nørsett, From high oscillation to rapid approximation I: Modified Fourier expansions, *IMA J. Num. Anal.* 28, 862-887 (2008).
16. D. Huybrechs, A. Iserles and S.P. Nørsett, From high oscillation to rapid approximation IV: Accelerating convergence, *IMA J. Num. Anal.* 31, 442-468 (2011).
17. B. Adcock, Convergence acceleration of modified Fourier series in one or more dimensions, *Math. Comp.* 80, 225-261 (2011).

For Review Only